

# ER12-2100

**EFORT**

ER12-2100,  
Maxium payload 12 kg with maxium reach 2051 mm.

## Highlights

Thanks to the optimization of stiffness and inertia brought by the new mechanical design, with advanced trajectory algorithm. The takt improved by 20%-30%; Compact cabinet design helps customers deploy the production line with more flexibility; IP67 wrist, high protection grade, to overcome harsh environment.

## Applications

It can be used in handling operations(strings layout), etc.

## Industries

Suitable for logistic, beverage and other industries.

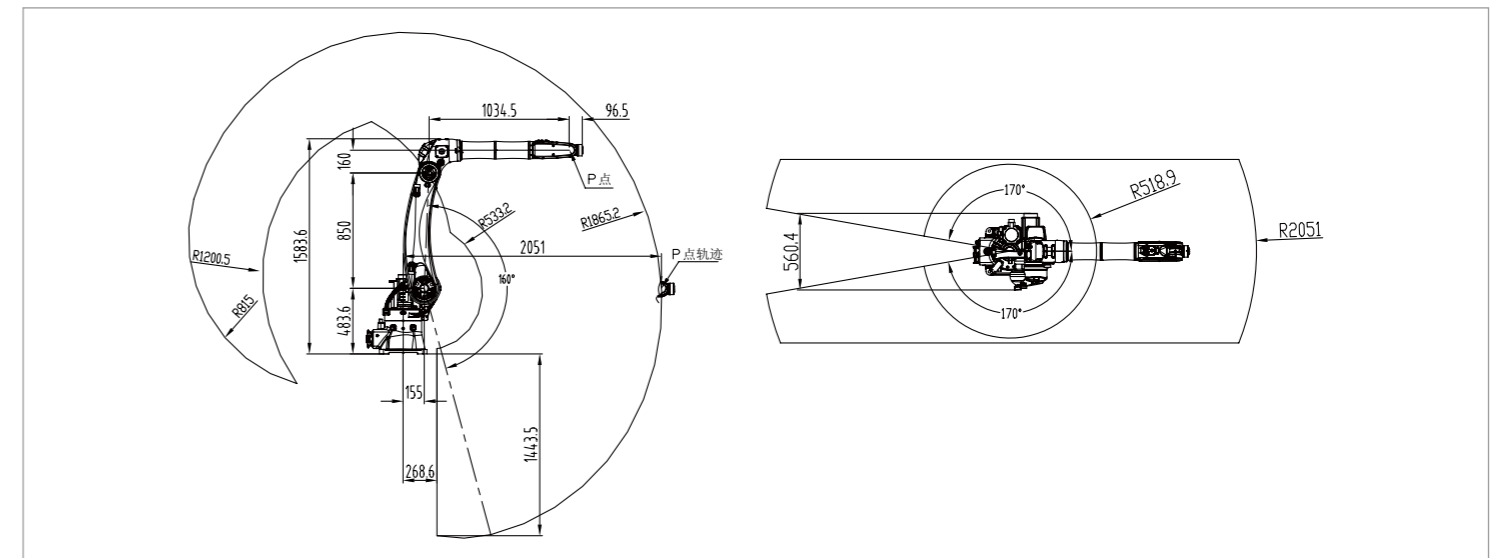


## SPECIFICATIONS

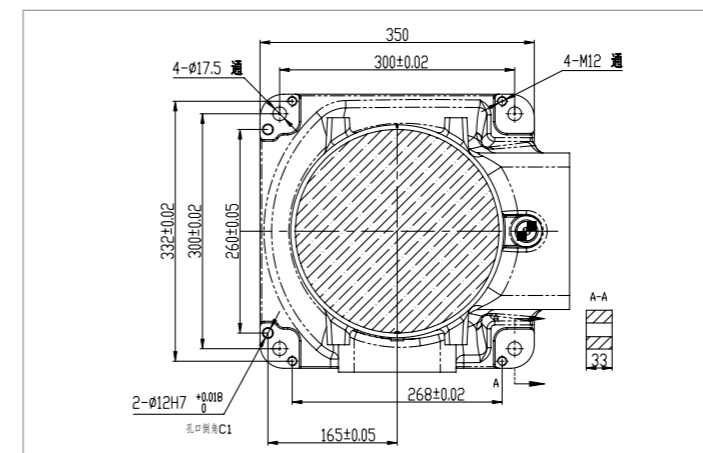
Model	ER12-2100	
Type	Articulated	
Controlled axes	6 Axes	
Max. payload on wrist	12 kg	
Repeatability	± 0.05 mm	
Robot weight	165 kg	
Reach	2051 mm	
Robot IP grade	IP54 / IP67 ( Wrist )	
Cabinet IP grade	IP20/ IP54 ( Optional )	
Drive mode	AC servo drive	
Installation	Floor, Upside-down, Wall	
Installation enviroment	Ambient temperature	0~45 °C
	Ambient humidity	RH≤80% ( No dew nor frost allowed )
	Vibration acceleration	4.9 m/s <sup>2</sup> ( < 0.5 G )

Allowable load moment at wrist	J4	25 N · m
	J5	25 N · m
	J6	12 N · m
Allowable load inertia at wrist	J4	0.78 kg · m <sup>2</sup>
	J5	0.78 kg · m <sup>2</sup>
	J6	0.3 kg · m <sup>2</sup>
Maximum speed	J1	220°/sec
	J2	180°/sec
	J3	200°/sec
	J4	360°/sec
	J5	420°/sec
	J6	600°/sec
Motion range	J1	± 170°
	J2	+77°/-160°
	J3	+165°/-85°
	J4	± 190°
	J5	± 120°
	J6	± 360°

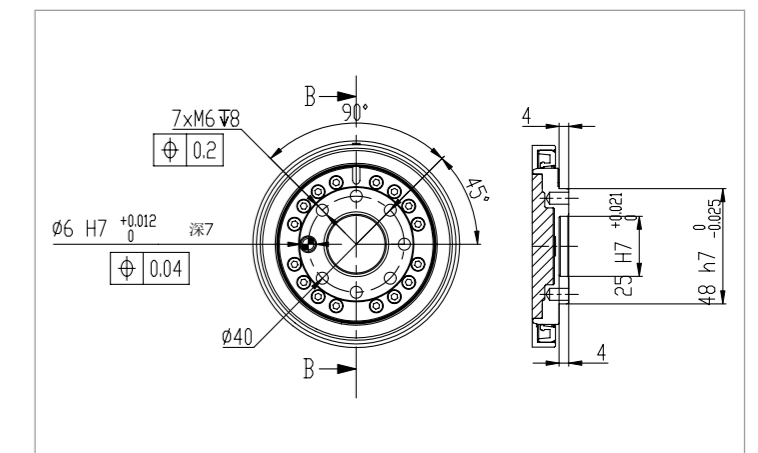
## OPERATING SPACE



## BASE MOUNTING SIZE



## END FLANGE MOUNTING SIZE



**EFORT INTELLIGENT EQUIPMENT CO.,LTD.**

PHONE: (00 86) 400-052-8877

ADDRESS: No.96 East Wanchun Road, China(Anhui) Pilot Free Trade Zone Wuhu Area, Wuhu, Anhui Province, China

WWW.EFORT.COM.CN